

METALLIC TRAYS & ACCESSORIES

12



CABLE TRAYS

CABLE TRAYS H40 - H50

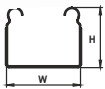


PRODUCT DESCRIPTION

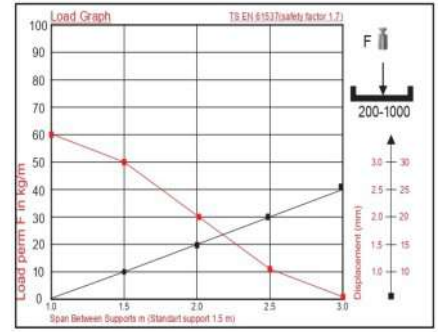
- Perforated steel sheet formatted into tray
- Pregalvanized steel sheet - **PG**
- Available also Hot Deep Galvanized **HDG - ISO 1461**
- Suitable for installations in demanding environment

APPLICATIONS - INSTALLATIONS

- In Door - Industrial - Commercial - Professional
- Cable Protection - Management - Routing - Support
- Easy Installation, Cable Accessibility, Enhanced Airflow
- Improved Cable Management system
- Easy fit : 3 Sets of M3x15 Nuts & Bolts



CODE	TYPE	DIMENSIONS		THKNS mm	LENGTH m
		H/mm	W/mm		
19-20200-504	PG40x50	40	50	0,6	3
19-20201-505	PG50x50	50	50	0,6	3



CABLE TRAYS H60

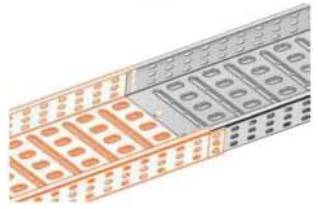


PRODUCT DESCRIPTION

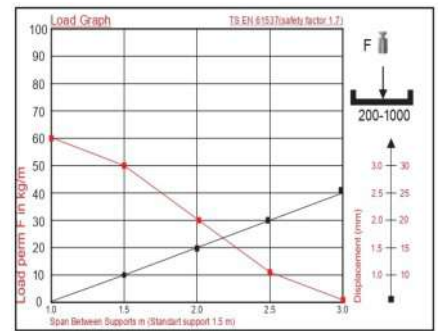
- Perforated steel sheet formatted into tray
- Pregalvanized steel sheet - **PG**
- Available also Hot Deep Galvanized **HDG - ISO 1461**
- Suitable for installations in demanding environment

APPLICATIONS - INSTALLATIONS

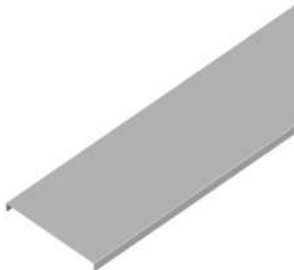
- In Door - Industrial - Commercial - Professional
- Cable Protection - Management - Routing - Support
- Easy Installation, Cable Accessibility, Enhanced Airflow
- Improved Cable Management system
- Easy fit : 3 Sets of M3x15 Nuts & Bolts



CODE	TYPE	DIMENSIONS		THKNS mm	LENGTH m
		H/mm	W/mm		
19-20210-106	PG100x60	60	100	0,6	3
19-20211-156	PG150x60	60	150	0,6	3
19-20212-206	PG200x60	60	200	0,6	3
19-20213-306	PG300x60	60	300	0,8	3
19-20214-406	PG400x60	60	400	0,9	3
19-20215-506	PG500x60	60	500	1,0	3
19-20216-606	PG600x60	60	600	1,6	3



CABLE TRAYS COVERS

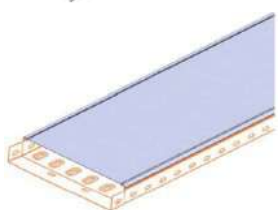


PRODUCT DESCRIPTION

- Imperforate Solid steel sheet formatted into covers
- Pregalvanized steel sheet - **PG**
- Available also Hot Deep Galvanized **HDG - ISO 1461**
- Suitable for installations in demanding environment

APPLICATIONS - INSTALLATIONS

- In Door - Industrial - Commercial - Professional
- Protection of installed cables inside the trays
- Specific formatting for easy push fit
- Improved Cable Management system



CODE	TYPE	DIMENSIONS		THKNS mm	LENGTH m
		H/mm	W/mm		
19-20340-050	PG50	50	10	0,6	3
19-20341-100	PG100	100	10	0,6	3
19-20342-150	PG150	150	10	0,6	3
19-20343-200	PG200	200	10	0,7	3
19-20344-300	PG300	300	10	0,7	3
19-20345-400	PG400	400	10	0,8	3
19-20346-500	PG500	500	10	1,0	3
19-20347-600	PG600	600	10	1,0	3

CABLE TRAYS ACCESSORIES



BOLTS & NUTS



PRODUCT DESCRIPTION - APPLICATIONS

- Metallic Bolts and Nuts
- Essential fasteners to join and secure trays together.
- Pregalvanized steel sheet - **PG**
- Available also Hot Deep Galvanized **HDG - ISO 1461**

CODE	TYPE	DIMENSIONS		PACKING
		Metric	L/mm	
19-20400-815	M8x15	M8	15	Pc
19-20401-008	Nut M8	M8		Pc

HORIZONTAL BEND 90°



PRODUCT DESCRIPTION - APPLICATIONS

- Metallic Steel Horizontal Bend **90°**
- Cable Trays installation system
- Pregalvanized steel sheet - **PG**
- Available also Hot Deep Galvanized **HDG - ISO 1461**

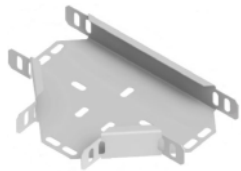
HORIZONTAL BENDS COVERS



PRODUCT DESCRIPTION - APPLICATIONS

- Imperforate Solid steel sheet formatted into covers
- Cable Trays installation system
- Pregalvanized steel sheet - **PG**
- Available also Hot Deep Galvanized **HDG - ISO 1461**

HORIZONTAL TEE



PRODUCT DESCRIPTION - APPLICATIONS

- Three ways metallic steel TEE Junction
- Cable Trays installation system
- Pregalvanized steel sheet - **PG**
- Available also Hot Deep Galvanized **HDG - ISO 1461**

HORIZONTAL TEE COVERS



PRODUCT DESCRIPTION - APPLICATIONS

- Imperforate Solid steel sheet formatted into covers
- Cable Trays installation system
- Pregalvanized steel sheet - **PG**
- Available also Hot Deep Galvanized **HDG - ISO 1461**

FOUR WAYS CROSSING



PRODUCT DESCRIPTION - APPLICATIONS

- Four ways metallic steel CROSS junction
- Cable Trays installation system
- Pregalvanized steel sheet - **PG**
- Available also Hot Deep Galvanized **HDG - ISO 1461**

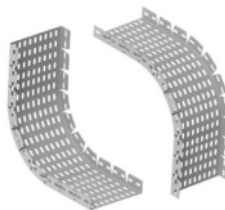
FOUR WAYS COVERS



PRODUCT DESCRIPTION - APPLICATIONS

- Imperforate Solid steel sheet formatted into covers
- Cable Trays installation system
- Pregalvanized steel sheet - **PG**
- Available also Hot Deep Galvanized **HDG - ISO 1461**

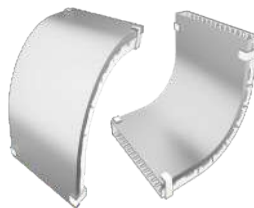
ADJUSTABLE VERTICAL BENDS 90°



PRODUCT DESCRIPTION - APPLICATIONS

- Metallic steel perforated adjustable Bend **90°**
- Can bend and used inward and outward
- Cable Trays installation system
- Pregalvanized steel sheet - **PG**
- Available also Hot Deep Galvanized **HDG - ISO 1461**

ADJUSTABLE BENDS COVERS



PRODUCT DESCRIPTION - APPLICATIONS

- Imperforate Solid steel sheet formatted into covers
- Can bend and used inward and outward
- Cable Trays installation system
- Pregalvanized steel sheet - **PG**
- Available also Hot Deep Galvanized **HDG - ISO 1461**

CARRIER SUPPORT



PRODUCT DESCRIPTION - APPLICATIONS

- Metallic Steel Carrier Support **90°**
- Support and mounting Cable trays installation system
- Pregalvanized steel sheet - **PG**
- Available also Hot Deep Galvanized **HDG - ISO 1461**

WALL MOUNTING SUPPORT



PRODUCT DESCRIPTION - APPLICATIONS

- Formatted Metallic Steel Mounting Support **90°**
- Support and mounting Cable trays installation system
- Pregalvanized steel sheet - **PG**
- Available also Hot Deep Galvanized **HDG - ISO 1461**

COVERS CLAMP



PRODUCT DESCRIPTION - APPLICATIONS

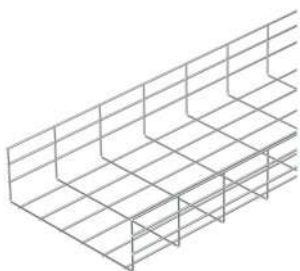
- Metallic Steel Clamp
- Secures the covers on the trays run
- Cable Trays installation system
- Pregalvanized steel sheet - **PG**
- Available also Hot Deep Galvanized **HDG - ISO 1461**





WIREMESH CABLE TRAYS

WIREMESH CABLE TRAYS H35 - H55



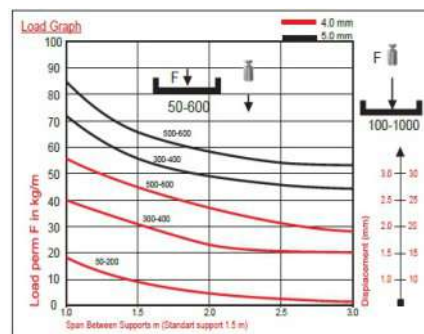
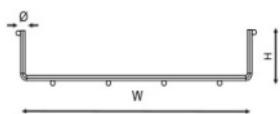
PRODUCT DESCRIPTION

- Formatted welded wire mesh to a metal wire net
- Electro Galvanized Steel - EN 149:2005
- Available upon request :
 - > **HDG** - Hot Deep Galvanized - ISO 1461
 - > **INOX** - Stainless steel
- Suitable for installations in demanding environment

APPLICATIONS - INSTALLATIONS

- In Door - Industrial - Commercial - Professional
- Cable Protection - Management - Routing - Support
- Easy Installation, Cable Accessibility, Enhanced Airflow
- Improved Cable Management system

CODE	TYPE	DIMENSIONS		THKNS Ømm	LENGTH m
		W/mm	H/mm		
19-20250-535	EG50x35	50	35	4	3
19-20251-505	EG50x55	50	55	4	3
19-20252-105	EG100x55	100	55	4	3
19-20253-155	EG150x55	150	55	4	3
19-20254-205	EG200x55	200	55	4	3
19-20255-305	EG300x55	300	55	4	3
19-20256-405	EG400x55	400	55	4	3
19-20257-505	EG500x55	500	55	4	3
19-20258-605	EG600x55	600	55	4	3



WIREMESH COVERS



PRODUCT DESCRIPTION

- Imperforate Solid steel sheet formatted into covers
- Pregalvanized steel sheet - **PG**
- Available also Hot Deep Galvanized **HDG - ISO 1461**
- Suitable for installations in demanding environment

APPLICATIONS - INSTALLATIONS

- In Door - Industrial - Commercial - Professional
- Protection of installed cables inside the Wiremesh
- Specific formatting for easy push fit
- Improved Cable Management system

CODE	TYPE	DIMENSIONS		THKNS mm	LENGTH m
		H/mm	W/mm		
19-20340-050	PG50	50	10	0,6	3
19-20341-100	PG100	100	10	0,6	3
19-20342-150	PG150	150	10	0,6	3
19-20343-200	PG200	200	10	0,7	3
19-20344-300	PG300	300	10	0,7	3
19-20345-400	PG400	400	10	0,8	3
19-20346-500	PG500	500	10	1,0	3
19-20347-600	PG600	600	10	1,0	3



COUPLERS

PRODUCT DESCRIPTION

- Screwed-Fit Metallic Coupler Set
- Fasteners to join and secure Wiremesh connections
- Pregalvanized steel sheet - **PG**
- Available also Hot Deep Galvanized **HDG - ISO 1461**



QUICK COUPLER

PRODUCT DESCRIPTION

- Pushed-Fit Metallic Coupler
- Fasteners to join and secure Wiremesh connections
- Pregalvanized steel sheet - **PG**
- Available also Hot Deep Galvanized **HDG - ISO 1461**



WALL SUPPORT - WELDED

PRODUCT DESCRIPTION - APPLICATIONS

- Welded Metallic Steel Support **90°**
- Support and mounting Cable trays Wall installation
- Pregalvanized steel sheet - **PG**
- Available also Hot Deep Galvanized **HDG - ISO 1461**



WALL MOUNTING SUPPORT

PRODUCT DESCRIPTION - APPLICATIONS

- Formatted Metallic Steel Mounting Support **90°**
- Support and mounting Cable trays installation system
- Pregalvanized steel sheet - **PG**
- Available also Hot Deep Galvanized **HDG - ISO 1461**



CABLE LADDERS



CABLE LADDERS M6

PRODUCT DESCRIPTION

- Perforated steel sheet formatted into tray
 - **PG** - Pregalvanized steel sheet - ISO 10346
- Available also :
- **HDG** Hot Deep Galvanized - ISO 1461
 - Thickness : 1,2mm & 1,5mm
 - Marine Type - Stainless Steel
 - Suitable for installations in demanding environment

APPLICATIONS - INSTALLATIONS

- In Door - Industrial - Commercial - Professional
- Cable Protection - Management - Routing - Support
- Easy Installation, Cable Accessibility, Enhanced Airflow
- Improved Cable Management system
- Easy push fit connection : 4 Sets of M8x15 Nuts & Bolts

CODE	TYPE	DIMENSIONS		THKNS mm	LENGTH m
		W/mm	H/mm		
19-20280-106	PG100x60	60	100	1,0	3
19-20281-206	PG200x60	60	200	1,0	3
19-20282-306	PG300x60	60	300	1,0	3
19-20283-406	PG400x60	60	400	1,0	3
19-20284-506	PG500x60	60	500	1,0	3
19-20285-606	PG600x60	60	600	1,0	3

