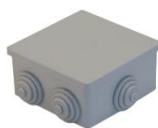








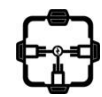









ΣΤΡΟΓΓΥΛΑ ΠΡΕΣΑΡΙΣΤΟ ΚΑΠΑΚΙ IP54
ROUND PRESS-ON LID IP54
∅ 80x40 HF



ΤΕΤΡΑΓΩΝΑ ΠΡΕΣΑΡΙΣΤΟ ΚΑΠΑΚΙ IP54
SQUARE PRESS-ON LID IP54
80x80 HF

TECHNICAL DATA SHEET

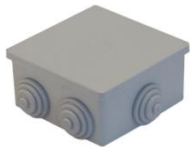
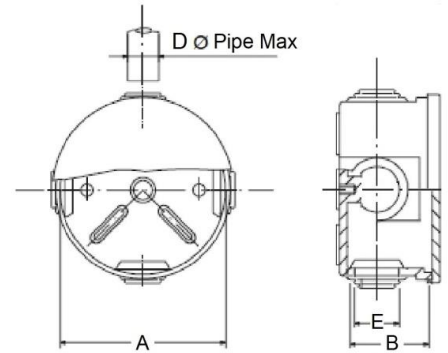
| | | | | |
|---------------------|---|-----------------|---|---|
| Directive | LVD 2014/35/EU | |  | |
| Standards | EN 60670-1:2005+A1:2013 Boxes and Enclosures, Electrical Installations EN 60529 Degrees of Protection , Enclosures, IP Rate | |  | |
| Halogen Acid Amount | EN 61034-2 :2005+A1:2013+AMD2:2019 EN 60754-1 :2014+A1:2020 - EN 60754-2 :2014+A1: 2020 | |  | |
| Applications | Εξωτερική, Εσωτερική | Outdoor, Indoor |  | |
| Installations | Οικιακές, Βιομηχανικές, Επαγγελματικές Ηλεκτρολογικές Εγκαταστάσεις Residential, Industrial, Professional Electrical Installations | |  | |
| Characteristics | Πλαστικό ανθεκτικό κουτί Διακλαδώσεων με πρεσαριστό κουμπωτό καπάκι Plastic Shockproof Junction box with Press-On Lid | |  | |
| | Με Εύκαμπτες τάπες εισόδου Σωληνώσεων, Εξαρτημάτων, Καλωδίων. With flexible Glands, entries for Accessories - Conduits – Cables | |  | |
| Material | Modified Thermoplastic Polyolefin | |  | |
| Specifications | IP Rate | 54 |  | |
| | Glow Wire Test | 650 °C |  | |
| | UV Resistance | R |  | |
| | Chemicals Resistance | R |  | |
| | Dielectric Strength | 400V |  | |
| | Temperature range | -25 °C | +90 °C |  |
| | Color | | | |



ΣΤΡΟΓΓΥΛΑ ΠΡΕΣΑΡΙΣΤΟ ΚΑΠΑΚΙ IP54
ROUND PRESS-ON LID IP54

∅ 80x40 HF

| | |
|-------------------------------|------------------|
| TYPE | ∅80x40 HF |
| CODE | 32-21071-804 |
| A ∅_mm | 80 |
| B / mm | 40 |
| D Pipe Od ∅_mm | 16/20 |
| E Entries ∅_mm | 23 |
| COLOR | GREY RAL7035 |
| PACKING/Carton Box_pcs | 60 |



ΤΕΤΡΑΓΩΝΑ ΠΡΕΣΑΡΙΣΤΟ ΚΑΠΑΚΙ IP54
SQUARE PRESS-ON LID IP54

80x80 HF

| | |
|-------------------------------|------------------|
| TYPE | 80x80 ECO |
| CODE | 32-21073-808 |
| A ∅_mm | 80 |
| B / mm | 40 |
| D Pipe OD ∅_mm | 16/20 |
| E Entries ∅_mm | 23 |
| COLOR | GREY RAL7035 |
| PACKING/Carton Box_pcs | 60 |

