



METALLIC CONDUITS & ACCESSORIES

11



FLEXIBLE CONDUITS

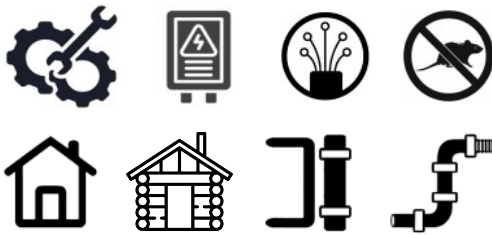
METALLIC SPIRAL

PRODUCT DESCRIPTION

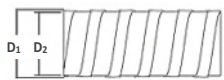
- Metallic, Flexible conduit, Spiraled Sheath
- Material : Profile of Pregalvanized Steel
- Suitable for Demanding environments
- No flame propagation, Self Extinguishing

APPLICATIONS - INSTALLATIONS

- Indoor - Shaded - Residential - Industrial
- Cable Protection and Routing
- Wiring, Power, Automation, Machine building
- Shipbuilding, Wooden Houses
- Resistant to : High Temperatures, Chemical, Rodents



CODE	TYPE	DIAMETER		LENGTH m	PACKING m
		D1/mm	D2/mm		
19-20010-009	9	12	9	50	50
19-20011-011	11	14	11	50	50
19-20012-014	14	17	14	50	50
19-20013-016	16	19	16	50	50
19-20014-018	18	21	18	50	50
19-20015-021	21	24	21	50	50
19-20016-026	26	29	26	25	25
19-20017-029	29	33	29	25	25
19-20018-032	32	35	32	25	25
19-20019-035	35	39	35	25	25
19-20020-037	37	41	37	25	25
19-20021-040	40	45	40	25	25
19-20022-042	42	47	42	25	25
19-20023-045	45	50	45	25	25
19-20024-050	50	56	50	25	25



METALLIC SPIRAL COATED

PRODUCT DESCRIPTION

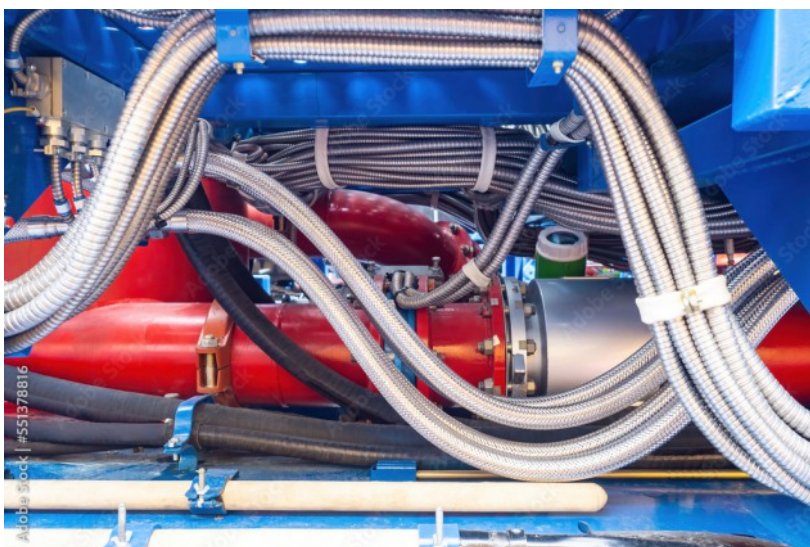
- Metallic, Flexible conduit, Spiraled Sheath with Extra coating
- Material : Profile of Pregalvanized Steel
- Coating : Plasticized PVC
- Suitable for Demanding environments
- No flame propagation, Self Extinguishing

APPLICATIONS - INSTALLATIONS

- Indoor - Outdoor - Residential - Industrial
- Cable Protection and Routing
- Wiring, Power, Automation, Machine building
- Shipbuilding, Wooden Houses
- Resistant to : High Temperatures, Chemical, Rodents



CODE	TYPE	DIAMETER		LENGTH m	PACKING m
		D1/mm	D2/mm		
19-20030-009	9	12	9	50	50
19-20031-011	11	15	11	50	50
19-20032-014	14	18	14	50	50
19-20033-016	16	20	16	50	50
19-20034-018	18	22	18	50	50
19-20035-021	21	26	21	50	50
19-20036-026	26	31	26	25	25
19-20037-029	29	35	29	25	25
19-20038-032	32	37	32	25	25
19-20039-035	35	41	35	25	25
19-20040-037	37	43	37	25	25
19-20041-040	40	46	40	25	25
19-20042-042	42	48	42	25	25
19-20043-045	45	52	45	25	25
19-20044-050	50	57	50	25	25
19-20045-063	63	70	63	25	25



RIGID CONDUITS



METALLIC RIGID - PG

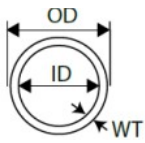
PRODUCT DESCRIPTION

- Metallic, Rigid Conduit
- Material : Profile of Pregalvanized Steel
- Suitable for Demanding environments
- No flame propagation, Self Extinguishing

APPLICATIONS - INSTALLATIONS

- Indoor - Shaded - Residential - Industrial
- Cable Protection and Routing
- Wiring, Power, Automation, Machine building
- Shipbuilding, Wooden Houses
- Resistant to : High Temperatures, Chemical, Rodents
- Conduit system for cable management with Assecories

CODE	TYPE	DIAMETER		THKNS mm	LENGTH m	PACKING m
		Od/mm	Id/mm			
19-20050-012	1/2"	17,9	15,8	1,07	3	30
19-20051-034	3/4"	23,4	20,9	1,25	3	30
19-20052-100	1"	29,5	26,6	1,45	3	30
19-20053-114	1-1/4"	38,3	35	1,65	3	15
19-20054-112	1-1/2"	44,2	40,8	1,65	3	15
19-20055-200	2"	55,8	52,5	1,65	3	3



METALLIC RIGID - HDG

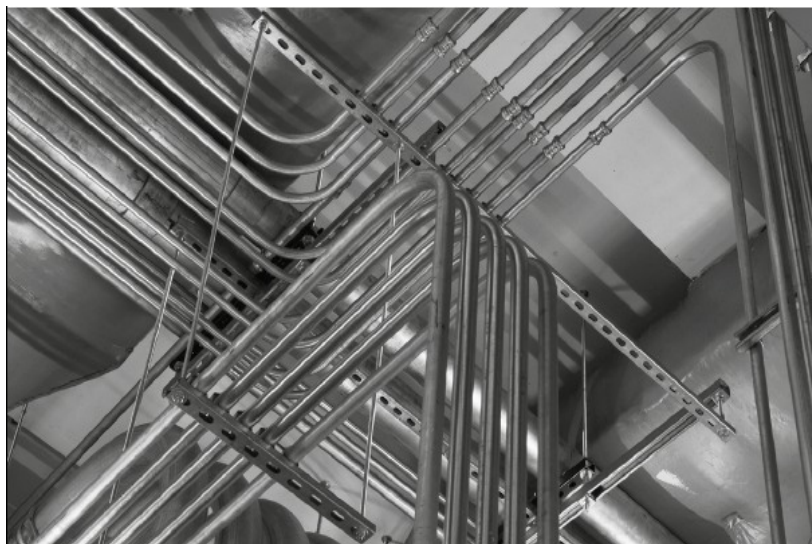
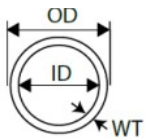
PRODUCT DESCRIPTION

- Metallic, Rigid Conduit
- Material : Profile of Pregalvanized Steel
- > Additional : Hot-dip galvanizing (HDG) - ISO1461
- > Process of coating by immersing in a bath of molten Zinc
- Suitable for Demanding environments
- No flame propagation, Self Extinguishing

APPLICATIONS - INSTALLATIONS

- Outdoor - Indoor - Residential - Industrial
- Cable Protection and Routing
- Wiring, Power, Automation, Machine building
- Infrastructures, Shipbuilding, Wooden Houses
- Resistant to :
 - > High Temperatures, Chemicals, Weather conditions
- Conduit system for cable management with Assecories

CODE	TYPE	DIAMETER		THKNS mm	LENGTH m	PACKING m
		Od/mm	Id/mm			
19-20060-012	1/2"	17,9	15,8	1,07	3	30
19-20061-034	3/4"	23,4	20,9	1,25	3	30
19-20062-100	1"	29,5	26,6	1,45	3	30
19-20063-114	1-1/4"	38,3	35	1,65	3	15
19-20064-112	1-1/2"	44,2	40,8	1,65	3	15
19-20065-200	2"	55,8	52,5	1,65	3	3





ACCESSORIES

COUPLING STEEL - SCREW SET



PRODUCT DESCRIPTION - APPLICATIONS

- Joins two runs of Conduits
- Includes Pipe Fastening Screws
- Material : Pregalvanized Steel
- No flame propagation
- Suitable for Demanding environments
- Conduit system Asseccories for cable management

CODE	TYPE	Od CONDUIT	PACKING Pcs
19-20100-012	1/2"	Ø 1/2" mm	1
19-20101-034	3/4"	Ø 3/4" mm	1
19-20102-100	1"	Ø 1" mm	1
19-20103-114	1-1/4"	Ø 1-1/4" mm	1
19-20104-112	1-1/2"	Ø 1-1/2" mm	1
19-20105-200	2"	Ø 2" mm	1

GLAND STEEL - SCREW SET - BOX / PIPE



PRODUCT DESCRIPTION - APPLICATIONS

- Connect Conduit run to an Watertight Box with Locknut
- Includes Pipe Fastening Screw
- Material : Pregalvanized Steel
- No flame propagation
- Suitable for Demanding environments
- Conduit system Asseccories for cable management

CODE	TYPE	Od CONDUIT	PACKING Pcs
19-20150-012	1/2"	Ø 1/2" mm	1
19-20151-034	3/4"	Ø 3/4" mm	1
19-20152-100	1"	Ø 1" mm	1
19-20153-114	1-1/4"	Ø 1-1/4" mm	1
19-20154-112	1-1/2"	Ø 1-1/2" mm	1
19-20155-200	2"	Ø 2" mm	1

BEND 90° - STEEL



PRODUCT DESCRIPTION - APPLICATIONS

- Joins and introduce a curve to the length of conduit
- 90° Bending to conduits installation system
- Material : Pregalvanized Steel
- No flame propagation
- Suitable for Demanding environments
- Conduit system Asseccories for cable management

CODE	TYPE	Od CONDUIT	PACKING Pcs
19-20120-012	1/2"	Ø 1/2" mm	1
19-20121-034	3/4"	Ø 3/4" mm	1
19-20122-100	1"	Ø 1" mm	1
19-20123-114	1-1/4"	Ø 1-1/4" mm	1
19-20124-112	1-1/2"	Ø 1-1/2" mm	1
19-20125-200	2"	Ø 2" mm	1

TWO HOLE PIPE STRAP - STEEL



PRODUCT DESCRIPTION - APPLICATIONS

- Secures the conduit run to Exposed installations
- Two Hole Fastner to Wall, Masonry, Plaster, Wood
- Material : Pregalvanized Steel
- No flame propagation
- Suitable for Demanding environments
- Conduit system Asseccories for cable management

CODE	TYPE	Od CONDUIT	PACKING Pcs
19-20130-012	1/2"	Ø 1/2" mm	1
19-20131-034	3/4"	Ø 3/4" mm	1
19-20132-100	1"	Ø 1" mm	1
19-20133-114	1-1/4"	Ø 1-1/4" mm	1
19-20134-112	1-1/2"	Ø 1-1/2" mm	1
19-20135-200	2"	Ø 2" mm	1

ONE HOLE PIPE STRAP - STEEL



PRODUCT DESCRIPTION - APPLICATIONS

- Secures the conduit run to Exposed installations
- OneHole Fastner to Wall, Masonry, Plaster, Wood
- Material : Pregalvanized Steel
- No flame propagation
- Suitable for Demanding environments
- Conduit system Asseccories for cable management

CODE	TYPE	Od CONDUIT	PACKING Pcs
19-20140-012	1/2"	Ø 1/2" mm	1
19-20141-034	3/4"	Ø 3/4" mm	1
19-20142-100	1"	Ø 1" mm	1
19-20143-114	1-1/4"	Ø 1-1/4" mm	1
19-20144-112	1-1/2"	Ø 1-1/2" mm	1
19-20145-200	2"	Ø 2" mm	1

METALLIC SQUARE BOXES - Screwed Lid



PRODUCT DESCRIPTION - APPLICATIONS

- Metallic Junction Box, Screwed cover
- Indoor - Outdoor - Wall Mounted > Exposed
- Suitable for Demanding environments
- Material : Pregalvanized Steel
- No flame propagation
- Wiring Junction or Extension
- With Prefab Entries

CODE	TYPE	DIMENSIONS mm	PACKING Pcs
19-20500-100	BOX 100x100M	100x100x75	1
19-20501-100	LID 100M	105x105	1

